



PH 605•339•2955 WWW.GREATPLAINSDENTAL.COM FAX 605•373•0235

## SLEEP CONSULT INFORMATION

### What You Need For A Great Plains Dental Sleep Consult Visit:



A current sleep study. Completed within the last 3-5 years.



A copy of your results from the sleep study.

A hardcopy must be brought to the appointment OR send via email to: [sleep@greatplainsdental.com](mailto:sleep@greatplainsdental.com) prior to your appointment.



Bring your medical insurance card or a copy

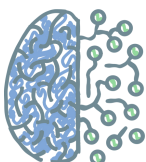


Fill out paperwork on our website: [www.greatplainsdental.com](http://www.greatplainsdental.com)

- Select the “Services” Dropdown from the top of the web page.
- Select “Snoring and Sleep Dentistry”
- Select “Sleep Appliance Paperwork”



All necessary dental treatment or restorations completed.  
Regular visits to your dentist for examinations



No current sleep study?

We offer a home based sleep screening!

Call our office to set up your screening or for more information.